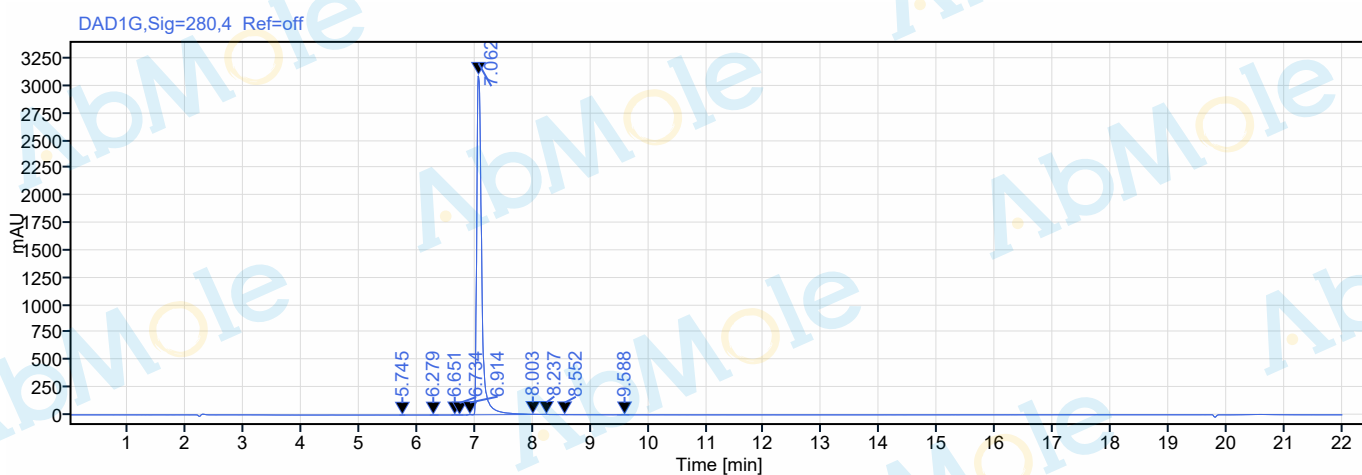




Sample name: M9259-Asciminib-02
Instrument: A012
Inj. volume: 6
Acq. method: HPLC
Processing method:
Manually modified:

Injection date:
Location:
Type:
Sample amount:



Signal: DAD1G,Sig=280,4 Ref=off

RT [min]	Type	Width [min]	Area	Height	Area%
5.745	MM m	0.10	1.13	0.41	0.01
6.279	BM m	0.15	3.24	1.04	0.02
6.651	BB	0.11	4.97	1.78	0.03
6.734	MM m	0.10	1.17	0.50	0.01
6.914	BB	0.11	11.44	3.80	0.06
7.062	BM m	1.02	18480.88	3101.54	99.75
8.003	MM m	0.15	9.82	1.85	0.05
8.237	BB	0.18	10.02	2.20	0.05
8.552	MM m	0.09	1.01	0.35	0.01
9.588	MM m	0.21	2.85	0.57	0.02