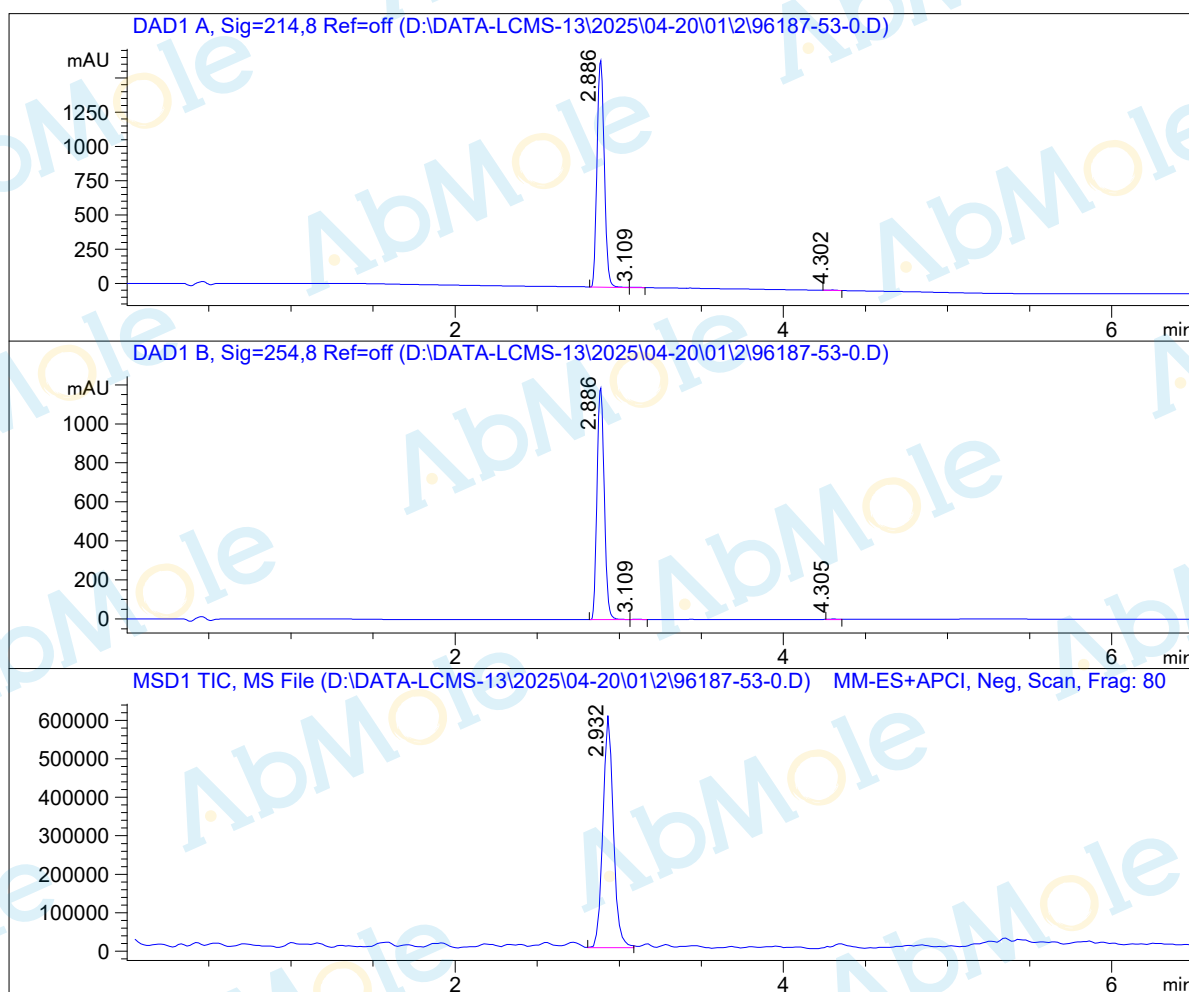


# LCMS Report

Sample Name : M6280-Brequinar-01  
 Data File : D:\DATA-LCMS-13\2025\04-20\01\2\96187-53-0.D  
 Injection Date : Tue, 1. Apr. 2025 Inj. Vol. : 5ul  
 Acq Operator : LCMS-13 Location : Vial 41  
 Acq. Method : D:\data-lcms-13\2025\04-20\01\2\N-05-95.M  
 Method Info. : column:Xbridge C18 5um 4.6\*50mm ;mobile phase:B (ACN)  
 A(0.05%TFA) ; gradient (B%)!as Acq.Method above



## Integration Results

Signal 1: DAD1 A, Sig=214,8 Ref=off

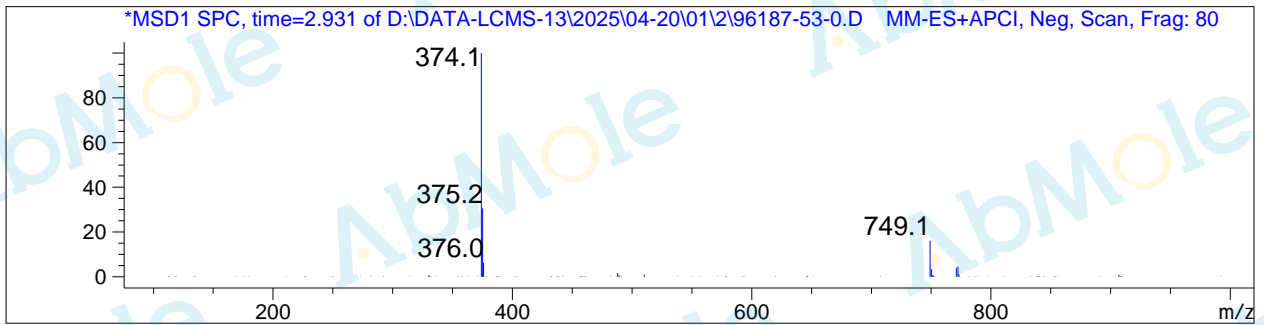
#	R.T.	Type	Height	Height%	Width	Area	Area %
1	2.886	MF	1671.955	99.646	0.050	5065.318	99.614
2	3.109	FM	2.794	0.166	0.052	8.753	0.172
3	4.302	MF	3.140	0.187	0.058	10.897	0.214

Signal 2: DAD1 B, Sig=254,8 Ref=off

#	R.T.	Type	Height	Height%	Width	Area	Area %
1	2.886	MF	1200.619	99.660	0.050	3626.102	99.619
2	3.109	FM	2.006	0.167	0.058	7.032	0.193
3	4.305	MM	2.086	0.173	0.055	6.850	0.188

Signal 3: MSD1 TIC, MS File

#	R.T.	Type	Height	Height%	Width	Area	Area %
1	2.932	VB	604036.313	100.000	0.067	2.672e+006	100.000



\*\*\* End of Report \*\*\*