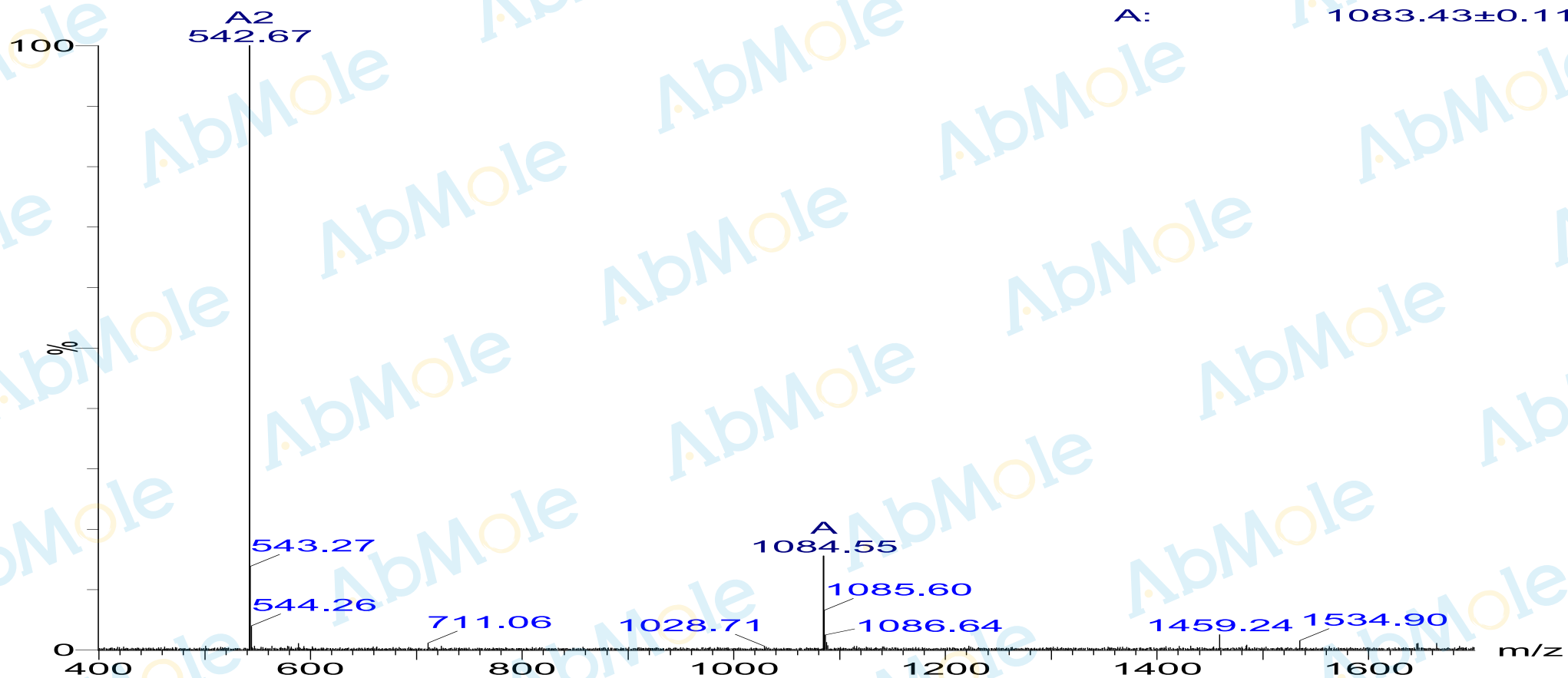


# MASS SPECTROMETRY REPORT



A: 1083.43±0.11

## Sample Description

Analyst: SHAO  
Sample: M11398-Vasopressin-02  
M.W.: 1084.2  
Lot. No.:

## Instrument

Waters ZQ 2000  
Probe: ESI  
Desolvation Gas Flow: 250L/Hr  
Cone: 35.0V  
Desolvation Temp.: 200 °C  
Source Temp.: 120 °C

## Waters ZQ 2000

Capillary: 3.0kV  
Extractor: 3.0V  
RF Lens: 0.1V  
T. Flow: 0.5ml/min  
B. Conc.: 50%H2O/50%ACN