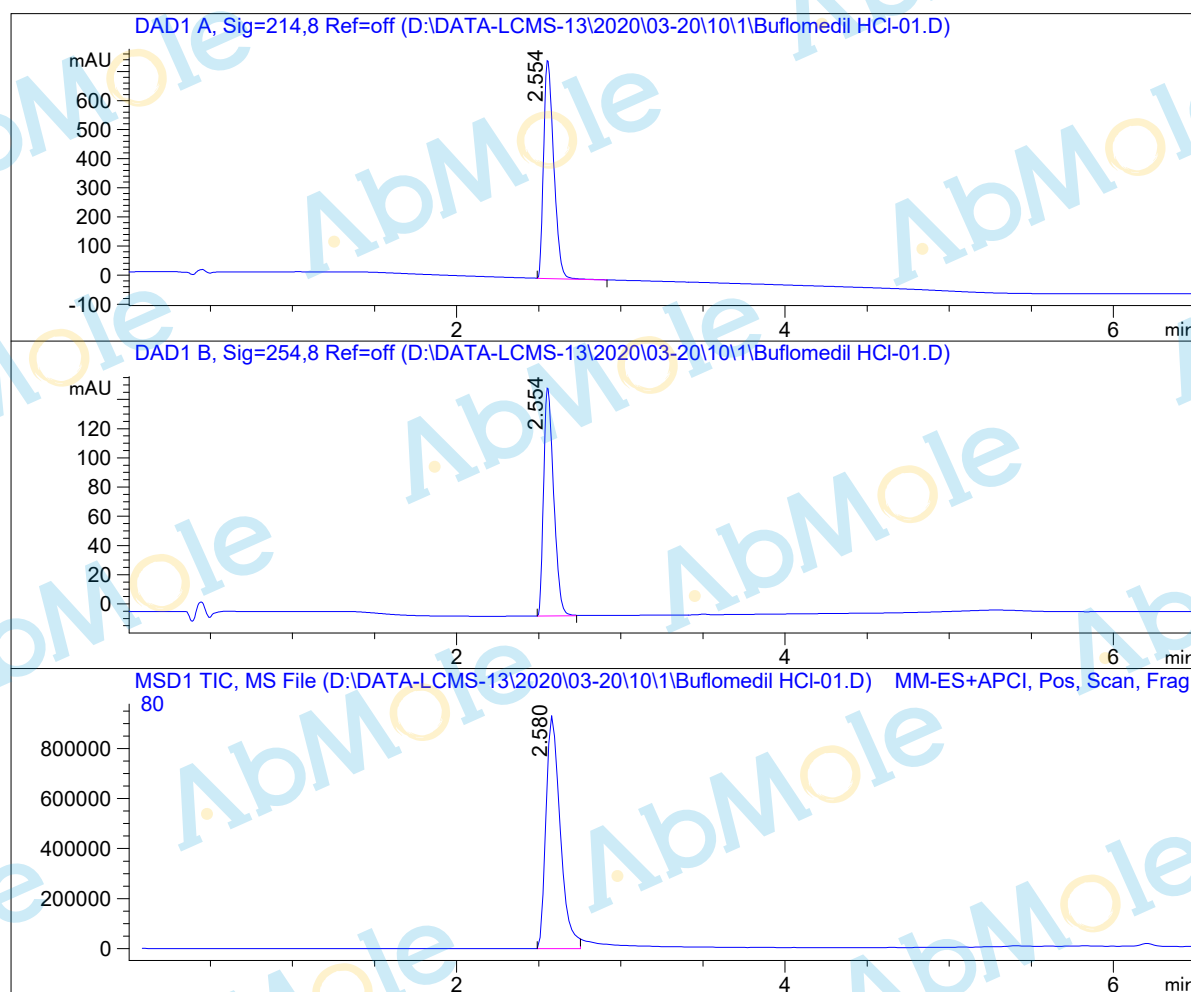


# LCMS Report

Sample Name : Buflomedil HCl-01  
Data File : D:\DATA-LCMS-13\2020\03-20\10\1\Buflomedil HCl-01.D  
Injection Date : Tue, 10. Mar. 2020 Inj. Vol. : 2ul  
Acq Operator : LCMS-13 Location : Vial 32  
Acq. Method : D:\data-lcms-13\2020\03-20\10\1\P-05-95.M  
Method Info. : column:Ecclipse XDB-C18 5um 4.6\*150mm ;mobile phase:B(ACN) A(0.02%NH4AC); gradient(B%)!as Acq.Method above



## Integration Results

Signal 1: DAD1 A, Sig=214,8 Ref=off

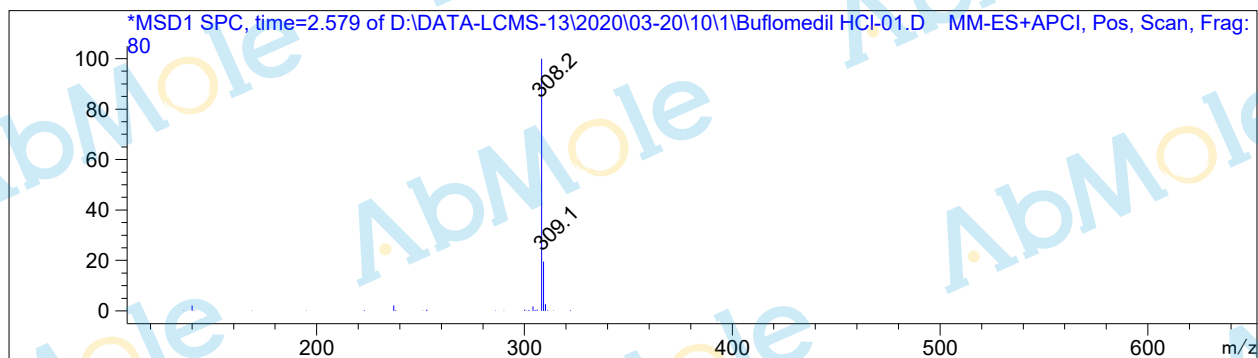
#	R.T.	Type	Height	Height%	Width	Area	Area %
1	2.554	MF	756.934	100.000	0.071	3213.855	100.000

Signal 2: DAD1 B, Sig=254,8 Ref=off

#	R.T.	Type	Height	Height%	Width	Area	Area %
1	2.554	MF	157.745	100.000	0.070	664.304	100.000

Signal 3: MSD1 TIC, MS File

#	R.T.	Type	Height	Height%	Width	Area	Area %
1	2.580	MM	939648.188	100.000	0.100	5.613e+006	100.000



\*\*\* End of Report \*\*\*